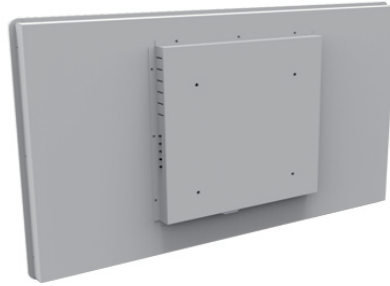
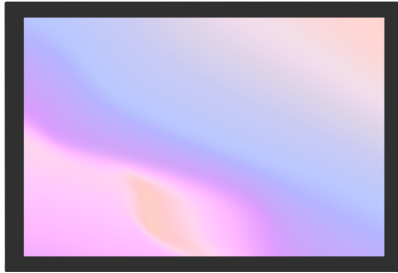


# 32"PCAP Touch Monitor



## Features:

178°/178° Wide view angle  
32"16:9 LED Backlight Monitor,1920x1080 resolution  
Port: VGA,HDMI,DP,USB  
Projected Capacitive Touch Technology,10 multi touch  
Power cord, VGA cable,USB cable included  
3mm touch glass for option  
2 years warranty



## Specification:

Screen diagonal dimension: 32 inch  
Viewable area W x H(mm): 698.4(H)x392.85(V)mm  
Led Type: LED  
Pixel Pitch: 0.36x0.36mm  
Screen Maximum Resolution:1920x1080  
Color Depth: 16.7 Million colors  
Brightness: 300 cd/ m<sup>2</sup>  
Auto Adjust: Yes  
Monitor Aspect Ratio: 16:9  
Contrast Ratio: 1000:1  
Response Time(ms): 5ms  
View Angle H/V(degrees): 178°/178°  
Port inputs: VGA+DP+HDMI(optional)  
Speakers: Optional  
OSD Languages: English, Spanish, German, Chinese, French, Italian  
VESA Mounting Pattern: 200x200mm  
Net weight: 13.5KG  
Gross Weight: 14.9KG  
Power- Watts(on and standby): < 55W  
Power input (Built inside): 100-240V,50/60Hz  
Operating Temperature: 0°C ~ 40°C  
Storage Temperature -20°C ~ 60°C  
Operating Humidity 10 ~ 85%  
Certifications CE,FCC

**ZYT Model No.:SS320**

ZYT INTERNATIONAL LIMITED

Shenzhen ZhengYuanTai Technology,Co.,Ltd

Add:1F,3F,5F,1st,Building,LeBao Industrial Park,FengXin Rd,Guangming New District,Shenzhen,China.



www.zytlcd.com  
michael@zytlcd.com  
anna@zytlcd.com