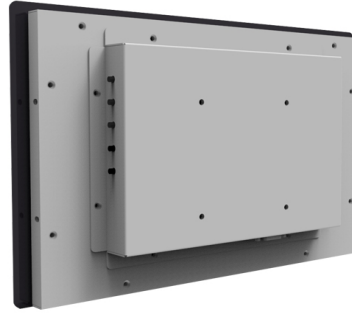
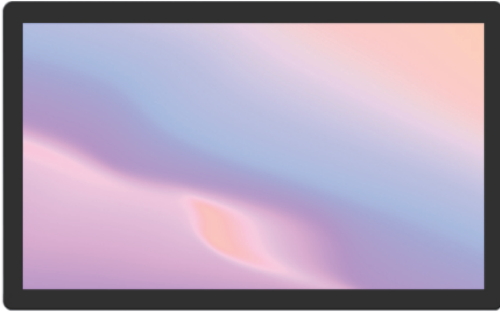


13.3" Industrial PCAP Monitor



Features:

Standard VESA hole
13.3" LED Backlight Monitor, 1920x1080 resolution
800:1 contrast ratio
Port: VGA, HDMI
Lower Power Consumption
Power cord, USB cable, VGA cable, USB cable included
Multi-touch, 10 points capacitive touch.
50K lifespan, 2 years warranty



HDMI



PCAP



High brightness



2 years warranty



Wide view angle



ZYT Model No.:SS130

Specification:

Screen diagonal dimension: 13.3 inch
Viewable area W x H(mm): 293.472x165.078 mm
Led Type: LED
Screen Maximum Resolution: 1920x1080
Color Depth: 16.7 Million colors
Brightness: 400 cd/ m²
Auto Adjust: Yes
Monitor Aspect Ratio: 16:9
Contrast Ratio: 800:1
View Angle H/V(degrees): 85°/85°/85°/85°
Port inputs: VGA+HDMI
Speakers: Optional
OSD Languages: English, Spanish, German, Chinese, French, Italian
VESA Mounting Pattern: 75x75mm
Net weight: 3.45KG
Gross Weight: 4.25KG
Power- Watts(on and standby): < 20W
Power input (External) : 12V, 2A
Operating Temperature: 0°C ~ 40°C
Storage Temperature: -20°C ~ 60°C
Operating Humidity: 10 ~ 85%
Certifications: CE, FCC

ZYT INTERNATIONAL LIMITED

Shenzhen ZhengYuanTai Technology, Co., Ltd

Add: 1F, 3F, 5F, 1st, Building, LeBao Industrial Park, FengXin Rd, Guangming New District, Shenzhen, China.



www.zytlcd.com
michael@zytlcd.com
anna@zytlcd.com